

Help Marathon County keep its community healthy

Know how to spot and report surface discharge of sewage

Surface Discharge: Untreated sewage released directly to the land surface.

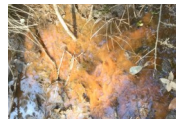
Surface discharge is an environmental and human health hazard. Reducing the occurrence of surface discharge is in **Marathon County's Strategic Plan**. To resolve surface discharge violations, CPZ focuses on guiding landowners towards compliance through conversation and support. Citation is our last resort.

Look for:

- **Pipes** terminating in roadside ditches releasing **blackish sludge** of significant odor, sometimes with a greasy shine
- Unusually **green or vigorous vegetative growth**, vigorous algae
- Toilet paper, pallets/plywood, straw piles, or tarps in ditches
- Random patches of **melted snow**



Orange to rusty brown solids in ditches are often colonies of iron-oxidizing wetland bacteria. They are usually **not** indicative of surface discharge on their own.



See surface discharge? Please call:

Shelly Solstice, Onsite Wastewater Specialist
Marathon County Conservation, Planning, & Zoning Department
(715) 573 - 5213

Requests to remain anonymous will be respected, where possible.

01/2022

Help Marathon County keep its community healthy

Know how to spot and report surface discharge of sewage

Surface Discharge: Untreated sewage released directly to the land surface.

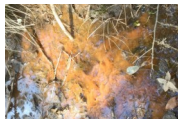
Surface discharge is an environmental and human health hazard. Reducing the occurrence of surface discharge is in **Marathon County's Strategic Plan**. To resolve surface discharge violations, CPZ focuses on guiding landowners towards compliance through conversation and support. Citation is our last resort.

Look for:

- **Pipes** terminating in roadside ditches releasing **blackish sludge** of significant odor, sometimes with a greasy shine
- Unusually **green or vigorous vegetative growth**, vigorous algae
- Toilet paper, pallets/plywood, straw piles, or tarps in ditches
- Random patches of **melted snow**



Orange to rusty brown solids in ditches are often colonies of iron-oxidizing wetland bacteria. They are usually **not** indicative of surface discharge on their own.



See surface discharge? Please call:

Shelly Solstice, Onsite Wastewater Specialist
Marathon County Conservation, Planning, & Zoning Department
(715) 573 - 5213

Requests to remain anonymous will be respected, where possible.

01/2022

Marathon County Strategic Plan 2018-2022

OBJECTIVE 6.3: Protect and enhance the quantity and quality of potable groundwater and potable surface water supplies.

Outcome Measure 2: By December 31, 2022, the number of Private Onsite Wastewater Treatment System (POWTS) discharging sewage to the ground surface will be reduced by 750 systems or more.

Marathon County Strategic Plan 2018-2022

OBJECTIVE 6.3: Protect and enhance the quantity and quality of potable groundwater and potable surface water supplies.

Outcome Measure 2: By December 31, 2022, the number of Private Onsite Wastewater Treatment System (POWTS) discharging sewage to the ground surface will be reduced by 750 systems or more.